

Arth-Rigi Railway Station (Switzerland)



Project description

The Arth-Rigi Railway is a Swiss standard gauge railway that has been operating since 1875 and runs from Arth-Goldau (518 m.a.s.l.) to the Rigi Kulm (1752 m.a.s.l.).

In 2014 an extensive renovation work took place in the Hochperron Station, which also included the replacement of the expansion joints.

mageba scope

Due to the great variations of the corner angles, wall connections and cover plates, it was decided to use the MIGUTAN expansion joint system, which enables completely watertight connections.

Other advantages of the product include the short installation time and cost effectiveness.

The MIGUTAN expansion joints are also extremely durable with a long service time and able to provide an optically appealing look, which characteristics were all among the building requirements.

Highlights & Facts

mageba Products:

Type: MIGUTAN expansion joint
Installation: 2017

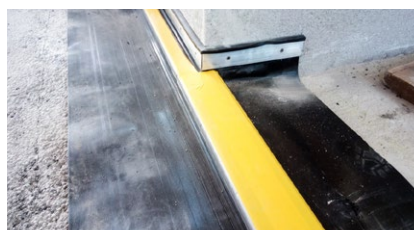
Structure:

City: Goldau
Country: Switzerland
Type: Railway station
Built: 2017
Owner: Rigi Bahnen AG
Contractor: Catenazzi Bau AG Weggis

The railway station is located in the Swiss town of Goldau



Detail of the installed MIGUTAN joint featuring a special wall connection profile



A prefabricated joint with a non-slip cover plate in the waiting hall of the railway station

