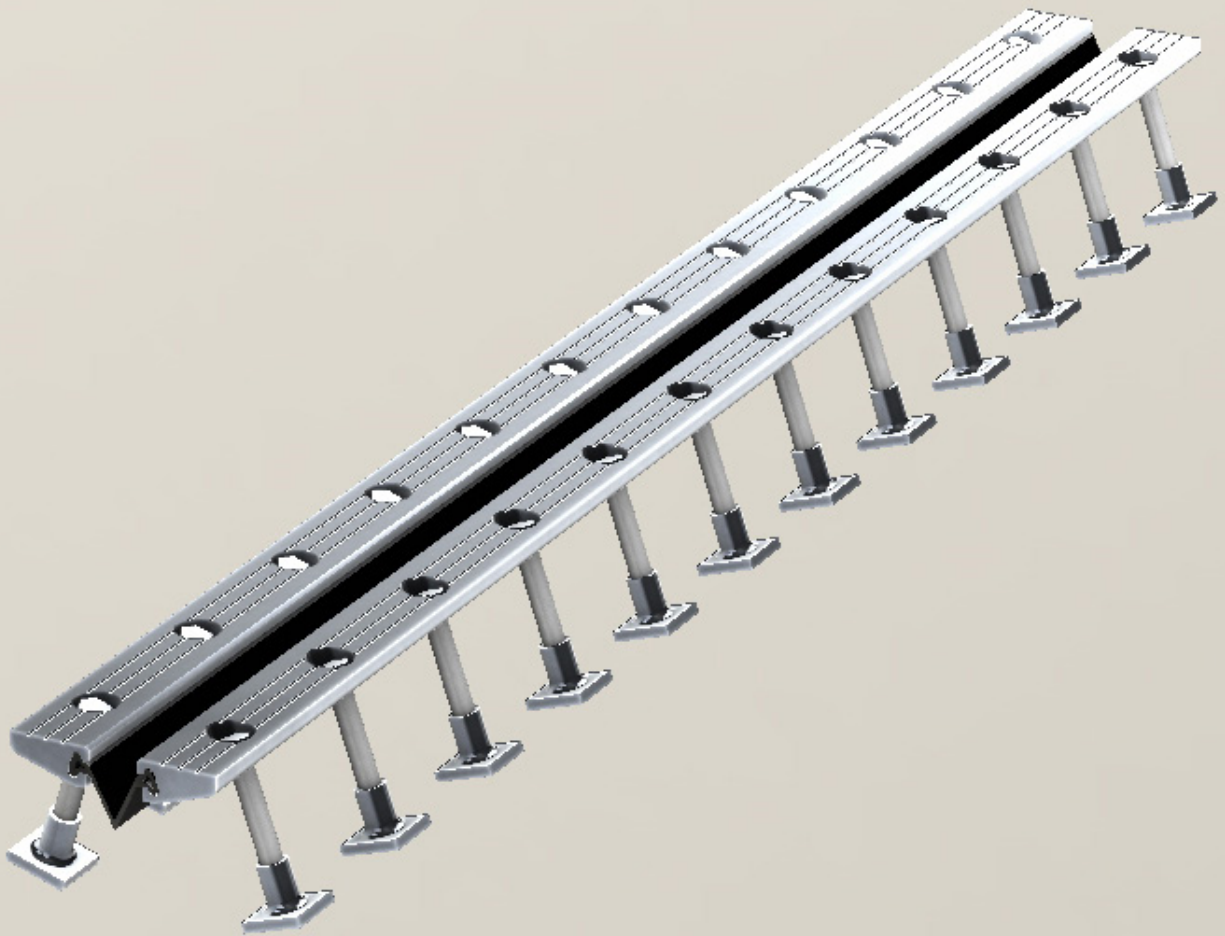




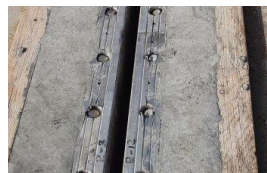
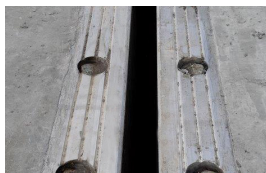
Expansion joints

mageba expansion joints – for lasting driving comfort



TENSA® GRIP AU SA

Heavy duty, watertight, slim



mageba



Expansion joints

Product characteristics

Principle

The TENSA®GRIP single gap expansion joints type AU SA is designed for bridge joint applications and to comply with the requirements of AS 5100.4 and RMS B315. The aluminium retainer and seal are designed for easy installation of the joint, to provide watertightness and to resist pullout of the seal up to the maximum movement.

Properties

The TENSA®GRIP type AU SA can facilitate movements of up to 125 mm depending on the sealing profile selected. The elastomeric seal is tested for compliance with RMS B315 Cl. 2.2. Should the sealing profile ever become damaged due to external mechanical influences, it can be quickly and inexpensively replaced.

The anchorage system consists of M20 Gr. 8.8 bolt, sleeve and anchor assemblies spaced at 200 mm centres.

The joint can be installed in either of the following ways:

- Casting directly with the bridge deck
- Casting a blockout into the bridge deck

Materials

The following high-quality materials are used in the manufacture of the TENSA®GRIP AU SA expansion joint:

- Edge profiles of 6061-T6 aluminium alloy
- Sealing profile of CR (drape or flush)
- Hot dip galvanised bolts
- Different materials are used in TMR projects (Department of Transport and Main Roads, Queensland)

Benefits

- Economical solution for small movements
- Use of high-quality materials ensures a long service life
- 100 %-watertightness thanks to specially designed sealing profile and connection flanges for deck waterproofing membrane
- Provides riding comfort
- Adapts easily for different road surface thicknesses
- Approved by TMR-Queensland for use on TMR projects

Quality

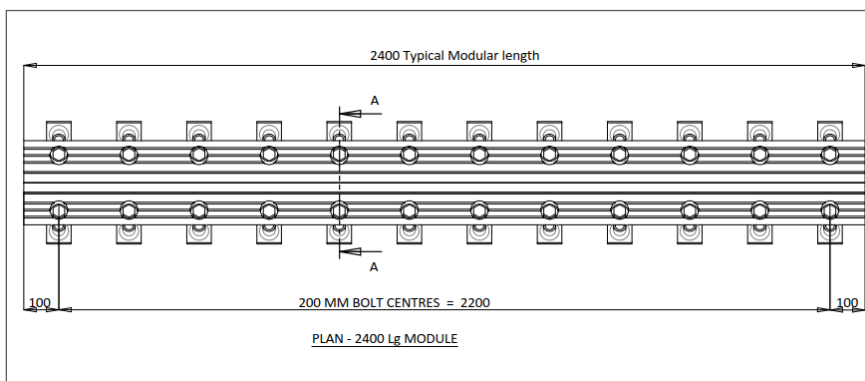
Over the past five decades, mageba expansion joints have proven their worth in thousands of structures under the most demanding conditions. In addition to the product properties, the extensive experience of our well-qualified manufacturing and installation staff also contributes to the high quality and durability of the products.

mageba has a process-orientated quality system that is certified in accordance with ISO 9001:2008. mageba factories are certified for welding in accordance with ISO 3834-2, and according to the current steel construction standard EN 1090.

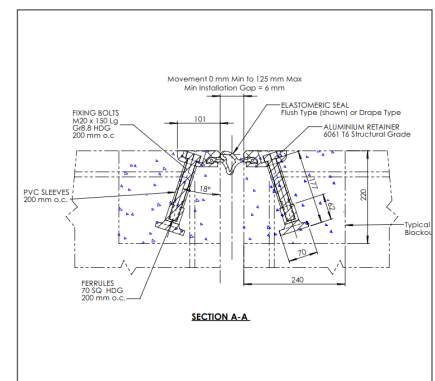
Support

Our experienced product specialists are ready to provide you with further information and to advise you in selecting the optimal solution for your project. In addition, mageba Australia offers an on-site delivery and installation service. Please contact us directly via info.au@mageba-group.com, or visit our website mageba-group.com.

Drawing and cross-section



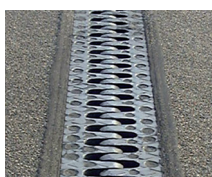
Typical Section (differs for TMR projects)



mageba expansion joint types



Single gap joints



Cantilever finger joint



Sliding finger joints



Modular expansion joints

mageba
mageba-group.com

engineering connections®