

Al Khail Road Improvement (UAE)



Project description

The Al Khail Road is located in Dubai and constitutes one of most important roads running parallel to Sheikh Zayed Road and Emirates Road.

With the main target of reducing traffic jams in the emirate of Dubai, the road development project has been launched in 2008 with a classification into four construction phases.

The project is part of RTA's (Road and Transport Authority) strategic plan up to 2015 which partially focuses on developing road networks catering to the increase in traffic consequent to the projected 6 % increase in the Dubai population.

mageba scope

Phase 2 comprises two multi-level flyovers instead of the existing two roundabouts at the intersection of Al Khail Road with Road 319 and Road 323 at Al Qouz Residential and Industrial Areas.

mageba supplied 62 RESTON®POT bearings for this construction phase. The bearings have been produced in mageba's headquarters in Switzerland and were designed according to the design of T.I.S. S.p.a.

The pot bearings of type TE allow sliding movements along one horizontal axis, and resist forces in a perpendicular direction. The bearings of type TA allow horizontal sliding movements in all directions, transmitting no external horizontal forces.

Highlights & facts

mageba products:

Type: RESTON®POT bearings of types TA and TE
Features: According to T.I.S. S.p.a. design requirements
Installation: 2009

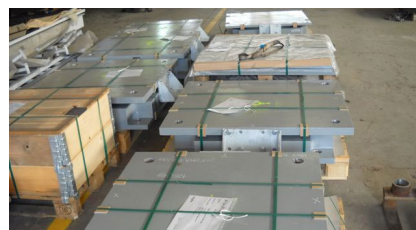
Structure:

City: Dubai
Country: United Arab Emirates
Type: Highway
Official road name: E 44, Dubai-Hatta Highway
Completion: 2010
Length: 118 km
Owner: Roads & Transport Authority (RTA)
Contractor: Gunal Construction Trading & Industry

The Al Khail Road connects the city of Dubai to the town of Hatta as well as the UAE with Oman



The pot bearings have been produced in mageba's headquarters in Bulach, Switzerland



A factory worker installing the elastomer dusk-cover device on a pot bearing

