



Expansion joints – Add-on products

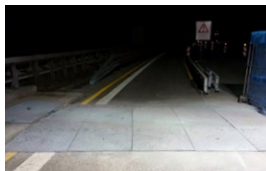
Infrastructure | Buildings | Industrial structures

mageba expansion joint add-on products – Mobile bridging plates



Mini-Flyover

Ready to use instantly, flexible, economical





Product overview

Due to the high volume of traffic, especially on the main roads of the federal motorways, even a partial closure of individual lanes or especially entire roads can cause serious traffic jams. In such cases, the associated noise and environmental pollution for detour routes would also increase significantly.

Intervention in traffic management

Road closures

When it is necessary to replace expansion joints, it is essential to intervene in traffic management and it is not always possible to shift the extensive expansion joint works to the weekend when traffic is low.

Assembly in sections

Both a partial closure and the delivery of divided expansion joints increase the execution times. Because of this delivery in parts, unnecessary site works such as welding of joints, corrosion protection repairs and possibly even sealing profile vulcanization joints are required.

Shift to night work

One way to address the associated problems of installing or replacing an expansion joint is to work only in the evenings or at night. However, this cannot always be implemented using the conventional installation processes, since in many cases it is necessary to close off the carriageway for a longer period of time.

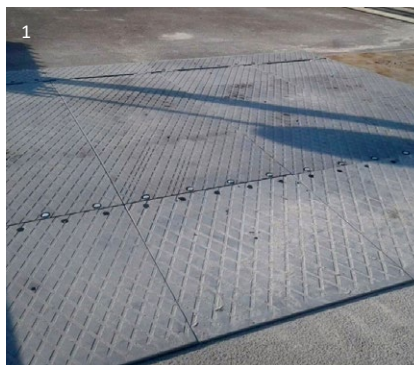
Solution with mageba's Mini-Flyover

By using a mobile Mini-Flyover Type A from mageba, work can be implemented without significantly affecting the flow of traffic. Since the work is combined in one construction phase, the overall construction time can be reduced in comparison to a conventional section-by-section assembly.

- During the day, at peak hours, the construction areas are covered. Traffic can flow uninterrupted with reduced speed
- In the evening, the lanes are closed and Mini-Flyovers are opened
- Work can be carried out on the road
- In the morning at the end of the shift, the Mini-Flyovers are closed again and traffic can flow uninterruptedly during daytime

Overview of the Mini-Flyover

The mageba Mini-Flyover Type A comprises of a set of steel plates with wedge-shaped approach sections and cover plates.



Mini-Flyover Type A can be used to cover the entire road or just individual lanes, e.g. in a 3+1 traffic routing.

The 3-part steel plates for a width of 1,000 mm consists of:

- Fixed ramp plate (approaching part)
L=1,000 mm
- Drive-over plate (cover plate)
L = 2,000 mm
- Ramp length
L=500 mm

Expansion joints installed diagonally can also be bridged by using a Mini-Flyover. For this purpose, the steel plates are offset every 1,000 mm.

- 1 mageba Mini-Flyover Type A: A 3-part steel plate set for a width of 1,000 mm
- 2 Assembly of a Mini-Flyover
- 3 Moving/closing of a Mini-Flyover

Customer benefits

- Welding joints on site, corrosion protection and even vulcanizing sealing profiles of joints can be completely eliminated, since sealing and concreting can be carried out in one step
- Necessary works on the expansion joint can be carried out without creating traffic jams, since the system can be used on different lanes in a flexible manner during the day or at night
- It provides an easy and comfortable crossing with a maximum speed limit of e.g. 60 km/h or 80 km/h
- Vehicles on the construction site are able to drive over the joint easily, and the Mini-Flyover can be moved to another position within a short time
- Damage that may occur at the expansion joints can be easily addressed by using the system

