

North Manama Causeway (Bahrain)



Project description

In 2011, the Ministry of Works in Bahrain announced the project of the North Manama Causeway, that – in the short term – aims at easing the traffic movement along Al Fateh Highway at its intersections with King Faisal Highway and Shaikh Hamad Bridge, as well as providing access to the Bahrain Bay (BB) and Bahrain Financial Harbour (BFH).

The long term goal falls within the Bahrain Vision 2030 where the new flyover and roads act as an integral part of the planned highway network connecting Al Fateh Highway with the fourth crossing between Manama and Busaiteen.

mageba scope

mageba supplied 360 units of RESTON®POT bearings that are made 100 % out of stainless steel (Duplex grade 1.4321).

Some of the installed pot bearings were tested as full scale bearings in order to prove a proper behavior of the bearings as per the approved design and given data by the designer.

The supply further comprised a total of 343.20 m of expansion joints of various types:

- Single gap joints of type TENSA®GRIP RS-B
- Modular expansion joints of types TENSA®MODULAR LR2, LR4, LR5, LR6 and LR7

Highlights & facts

mageba products:

Type: RESTON®POT bearings
TENSA®MODULAR expansion joints
TENSA®GRIP single gap joints

Features: Bearings made 100 % out of stainless steel

Installation: 2012

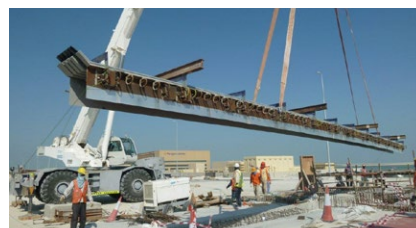
Structure:

City: Manama
Country: Bahrain
Type: Highway
Completion: 2016
Owner: Ministry of Works
Consultant: Hyder Consulting Middle East Ltd.
Contractor: "Six Construct – Rizzani de Eccher" JV

The Kingdom of Bahrain is an island country situated near the western shores of the Persian Gulf



Delivery of the modular expansion joints of various types (RS-B and LR2, 4, 5, 6, 7) to construction site



The pot bearings are made 100 % out of DUPLEX stainless steel grade 1.4362 for extended durability

