

# Clinker Silo – Vasilico Cement (Cyprus)



## Project description

A clinker silo is a special silo type that features the following application description:

After the raw meal is burned, the emerging clinker of varying consistency is stored for further processing. In addition to the intense dust generation, the sometimes very high product temperatures and the strong abrasion place heavy demands on the measurement technology. Depending on the production capacity of a cement plant, the clinker silos can be of considerable size, often reaching a height of over 50 m.

The clinker silo at the Vasilico Cement Factory features concrete piles, a prestressed concrete wall, a steel roof with cellular beams resting on spherical bearings.

The silo is located in Mari, a village located in the Greek Cypriot area controlled by the Cypriot Government



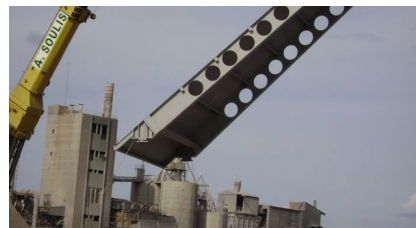
## mageba scope

mageba received an order of 34 RESTON®SPHERICAL bearings to ensure the controlled transfer of the forces between the silo's superstructure and substructure.

Since these bearings are exposed to uplift loads, they are equipped with special clamps that ensure the integrity of the bearing.

Thanks to the use of ROBO®SLIDE high-grade sliding material instead of PTFE, the bearings are as small and compact as possible. ROBO®SLIDE is made up of a patented modified ultrahigh molecular weight polyethylene and offers increased wear-resistance and load capacity. It is thus particularly suitable for use in sliding bearings for bridges and buildings.

The roof panels with bearings attached, in transit to the silo's roof



## Highlights & facts

### mageba products:

Type: RESTON®SPHERICAL uplift bearings  
Features:  $V_{max} = 450 \text{ kn}$   
 $V_{min} = -150 \text{ kn}$   
Equipped with ROBO®SLIDE  
Installation: 2007

### Structure:

City: Mari  
Country: Cyprus  
Type: Clinker Silo  
Construction: 2007–2008  
Owner: Vasilico Cement Works  
Contractor: Medon Construction Ltd.

The 34 spherical bearings made in Switzerland and ready for dispatch

