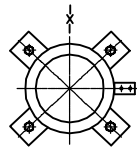
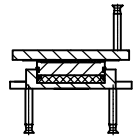


TA 1

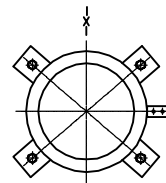
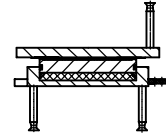


Topf/ Pot

MÖGLICHE LASTFÄLLE / POSSIBLE LOADING CASES

LF / LC : A LF / LC : B
 Vertikallast / Vertical load $N_{Ed,max} = 714 \text{ kN}$ Vertikallast / Vertical load $N_{Ed,min} \geq 0 \text{ kN}$

TA 2

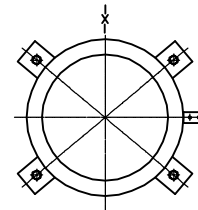
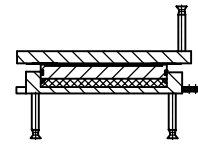


Topf/ Pot

MÖGLICHE LASTFÄLLE / POSSIBLE LOADING CASES

LF / LC : A LF / LC : B
 Vertikallast / Vertical load $N_{Ed,max} = 1595 \text{ kN}$ Vertikallast / Vertical load $N_{Ed,min} \geq 0 \text{ kN}$

TA 3

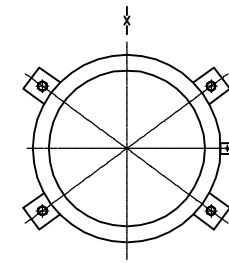
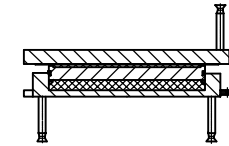


Topf/ Pot

MÖGLICHE LASTFÄLLE / POSSIBLE LOADING CASES

LF / LC : A LF / LC : B
 Vertikallast / Vertical load $N_{Ed,max} = 2913 \text{ kN}$ Vertikallast / Vertical load $N_{Ed,min} \geq 0 \text{ kN}$

TA 4

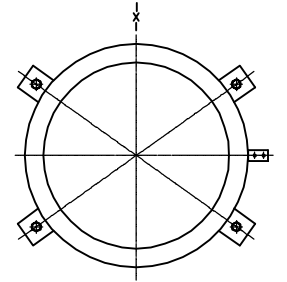
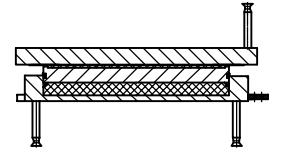


Topf/ Pot

MÖGLICHE LASTFÄLLE / POSSIBLE LOADING CASES

LF / LC : A LF / LC : B
 Vertikallast / Vertical load $N_{Ed,max} = 4496 \text{ kN}$ Vertikallast / Vertical load $N_{Ed,min} \geq 0 \text{ kN}$

TA 5

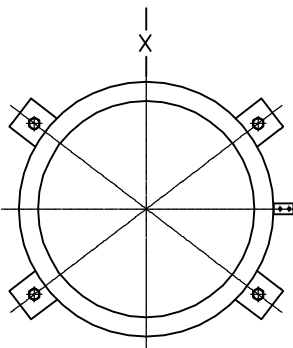
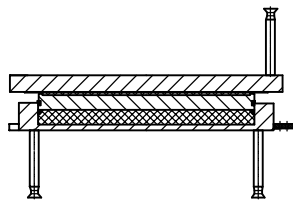


Topf/ Pot

MÖGLICHE LASTFÄLLE / POSSIBLE LOADING CASES

LF / LC : A LF / LC : B
 Vertikallast / Vertical load $N_{Ed,max} = 6388 \text{ kN}$ Vertikallast / Vertical load $N_{Ed,min} \geq 0 \text{ kN}$

TA 6

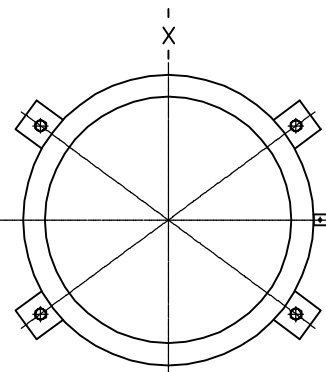
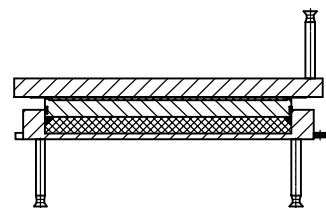


Topf/ Pot

MÖGLICHE LASTFÄLLE / POSSIBLE LOADING CASES

LF / LC : A LF / LC : B
 Vertikallast / Vertical load $N_{Ed,max} = 8647 \text{ kN}$ Vertikallast / Vertical load $N_{Ed,min} \geq 0 \text{ kN}$

TA 7

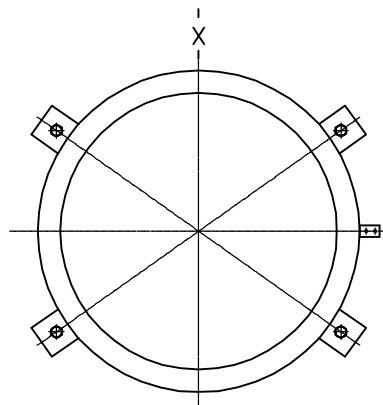
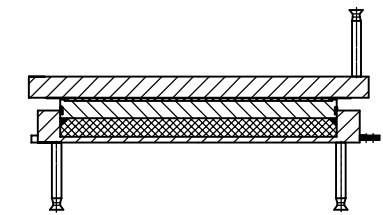


Topf/ Pot

MÖGLICHE LASTFÄLLE / POSSIBLE LOADING CASES

LF / LC : A LF / LC : B
 Vertikallast / Vertical load $N_{Ed,max} = 11207 \text{ kN}$ Vertikallast / Vertical load $N_{Ed,min} \geq 0 \text{ kN}$

TA 8

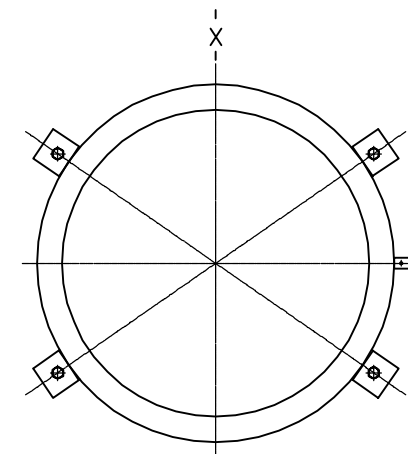
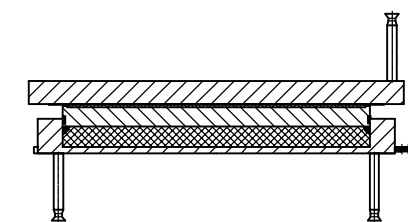


Topf/ Pot

MÖGLICHE LASTFÄLLE / POSSIBLE LOADING CASES

LF / LC : A LF / LC : B
 Vertikallast / Vertical load $N_{Ed,max} = 14143 \text{ kN}$ Vertikallast / Vertical load $N_{Ed,min} \geq 0 \text{ kN}$

TA 9

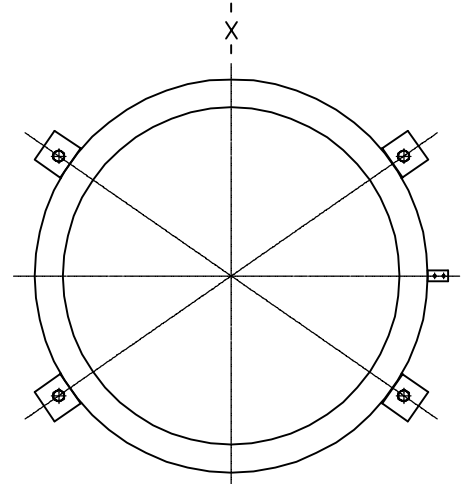
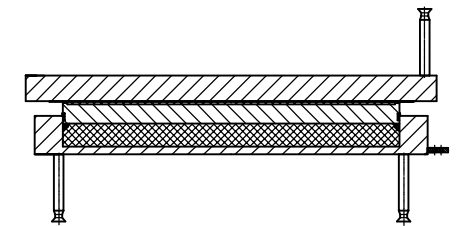


Topf/ Pot

MÖGLICHE LASTFÄLLE / POSSIBLE LOADING CASES

LF / LC : A LF / LC : B
 Vertikallast / Vertical load $N_{Ed,max} = 17422 \text{ kN}$ Vertikallast / Vertical load $N_{Ed,min} \geq 0 \text{ kN}$

TA 10



Topf/ Pot

MÖGLICHE LASTFÄLLE / POSSIBLE LOADING CASES

LF / LC : A LF / LC : B
 Vertikallast / Vertical load $N_{Ed,max} = 20986 \text{ kN}$ Vertikallast / Vertical load $N_{Ed,min} \geq 0 \text{ kN}$