

A1 Motorway Bridges, Toruń (Poland)



Project description

Autostrada A1, the Polish part of European route E75, stretches the length of Poland from the northern Baltic coast to the Czech border in the south with a length of 568 km. The motorway was newly constructed or re-constructed along its entire length in recent years, and mageba played a part in the construction of many of the bridges along its route.

The section between the towns of Toruń and Stryków in northern Poland contains a large number of bridges that were constructed using mageba products.

mageba scope

mageba supplied 762 RESTON®POT bearings for the construction of 23 bridges on this stretch of motorway. The vertical load-carrying capacities of these pot bearings varied between 850 kN and 30,000 kN per bearing. Some bearings are designed to resist horizontal movements in any direction (type TF, “fixed”), while others are designed to accommodate sliding movements in all directions (TA, “free sliding”) or along one axis only (TE, “guided sliding”).

Highlights & facts

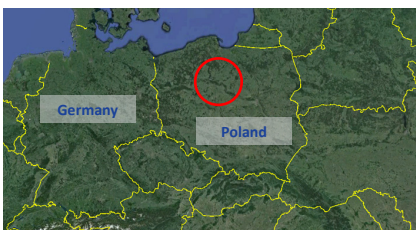
mageba products:

Type: RESTON®POT bearings
Features: For vertical loads of up to 30,000 kN
Installation: 2011

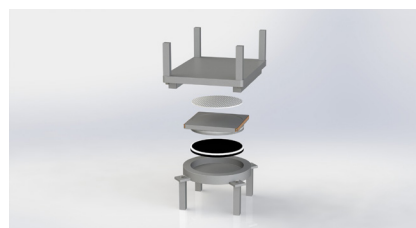
Structures:

Located on: A1 motorway
Country: Poland
Completed: 2012
Type: Various
Contractor: SRB Polska
Owner: GDDKiA

The bridges are on the A1 motorway between Toruń and Stryków in northern Poland



Schematic representation (exploded view) of a guided-sliding RESTON®POT bearing (type TE)



A RESTON®POT bearing as fabricated, ready for installation

