

Parking Deck of Square Technology Group Co. Ltd (China)



Project description

Square Technology Group Co. Ltd, founded in 1986, is a leading manufacturer of freezers, refrigeration and cold chain equipment in China, located in Nantong City of Jiangsu province. The parking area is on the roof of a newly constructed single-storey workshop with an area of almost 38,000 m² and a total height of 12.5 m.

The project owner required a solution with flat expansion joints to guarantee the driving and walking safety on the parking deck and its ramps. In addition an easy cleaning and full watertightness had to be ensured.

mageba scope

In terms of joints mageba supplied 813.78 m of TENSA®POLYFLEX®Advanced PU PA30 expansion joints including 18.9 m for the access ramps with a slope of 15%. The TENSA®POLYFLEX®Advanced PU provides a long lifespan due to the high quality of the overall durability of the polyurethane material and its impermeability to water or salt. This type of expansion joint PA30 allows a movement capacity of +20/-10 mm. Installation was fully carried out by mageba.

This is the first TENSA®POLYFLEX®Advanced PU joints applied in a building project in China.

Highlights & Facts

mageba products:

Type: TENSA®POLYFLEX®Advanced PU
Completion: 2019

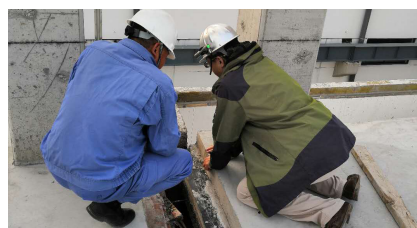
Structure:

City: Nantong
Country: China
Type: Parking deck
Completion: 2019
Area: 38,000 m²
Owner: Square Technology Group Co., Ltd

The project is located in Nantong, Jiangsu Province, China



During the inspection of the parking deck



Installed TENSA®POLYFLEX®Advanced PU

