

Lam Tin Tunnel Footbridge (China)



Project description

The Tseung Kwan O – Lam Tin Tunnel (TKOLTT) is approximately 4.2 km long, and connects Tseung Kwan O with East Kowloon.

The whole project included the construction of a section of Road P2 in TKO Town Centre, the modification of the existing road junction of the Po Yap, Po Shun and Chui Ling roads into a signal-controlled junction, and finally the construction of the Southern Footbridge which also carries a cycle lane.

In addition, elevators for the bridge were also built for an easier access, and the Po Yap Road / Tong Yin Street junction has been upgraded as well.

One of the main challenges during the construction of the bridge was to maintain a clear road access to the entrance of the tunnel.

mageba scope

For the footbridge mageba provided 16.2 m of TENSA®GRIP RS-B 200 expansion joints in total, and 8 RESTON®POT bearings with a maximum vertical load capacity of 10,785 kN and a maximum horizontal load capacity of 1,819 kN.

The bearings were specially designed with stainless steel dowels and fixing bolts according to the client's requirement.

In order to reduce the risk of bridge crumbling, the bearings were fitted with a special tension anchor system to constraint the overturning force arising from the structure.

Since the footbridge is located near the sea, special coating has been applied on the products that provides suitable corrosion protection in this marine climate.

Highlights & Facts

mageba Products:

Type: RESTON®POT bearings, TENSA®GRIP RS-B joints

Installation: 2020

Structure:

City: Hong Kong

Country: China

Type: Footbridge

Built: 2021

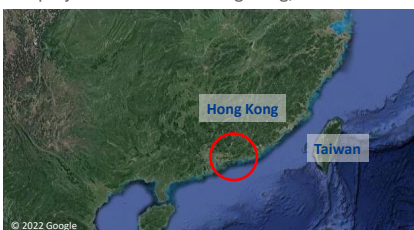
Length: 200 m

Owner: Hong Kong Civil Engineering and Development Department

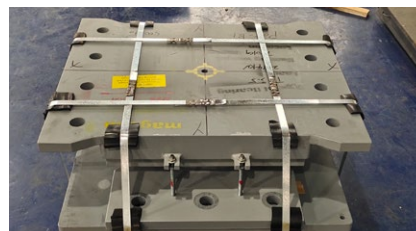
Contractor: Zhen Hua Engineering Co., Ltd

Engineer: Meinhardt

The project is located in Hong Kong, China



A RESTON®POT bearing ready to be shipped to site



A RESTON®POT bearing during testing

