

# Swan River Pedestrian Bridge (Australia)



## Project description

Swan River Pedestrian Bridge also known as the “Matagarup Bridge” is a pedestrian crossing over the Swan River in Perth, Western Australia, that connects East Perth with the Perth Stadium and Sports Precinct on the Burswood Peninsula.

The bridge connects visitors to the Burswood Peninsula, including the Perth Stadium, with public transport and car parks in East Perth and the Perth Central Business District.

The expression of interest to design and construct the pedestrian bridge was initiated by the Western Australian State Government in February 2014.

Construction on the \$91.5 m bridge was initiated in late 2015 and the structure was completed in July 2018.

## mageba scope

In 2018, mageba was selected for supplying 14 RESTON®POT bearings to ensure the controlled transfer of loads between the bridge and its substructure.

The maximum vertical load of the bearings is 2,250 kN each.

In order to meet the client's tight deadline, the installed bearings were manufactured locally in Australia, using an adopted galvanizing process which resulted in both, a quicker and a more economically efficient procedure, but provided the same protection level against corrosion.

The bearings were tested in mageba's NATA Lab in Australia and delivered to site within seven weeks.

## Highlights & Facts

### mageba products:

Type: RESTON®POT bearings  
Installation: 2018

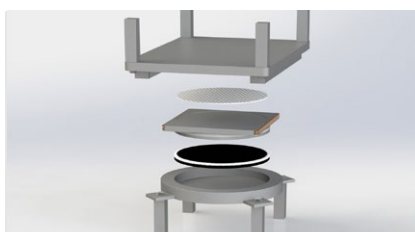
### Structure:

City: Perth  
Country: Australia  
Type: Through arch pedestrian bridge  
Completion: 2018  
Length: 376 m  
Owner: Western Australian State Government  
Contractor: York Rizzani JV  
Engineer: Mott MacDonald and Enigma

The project is located in Perth, Australia



The build up of a RESTON®POT bearing



Night view of the Swan River Pedestrian Bridge

